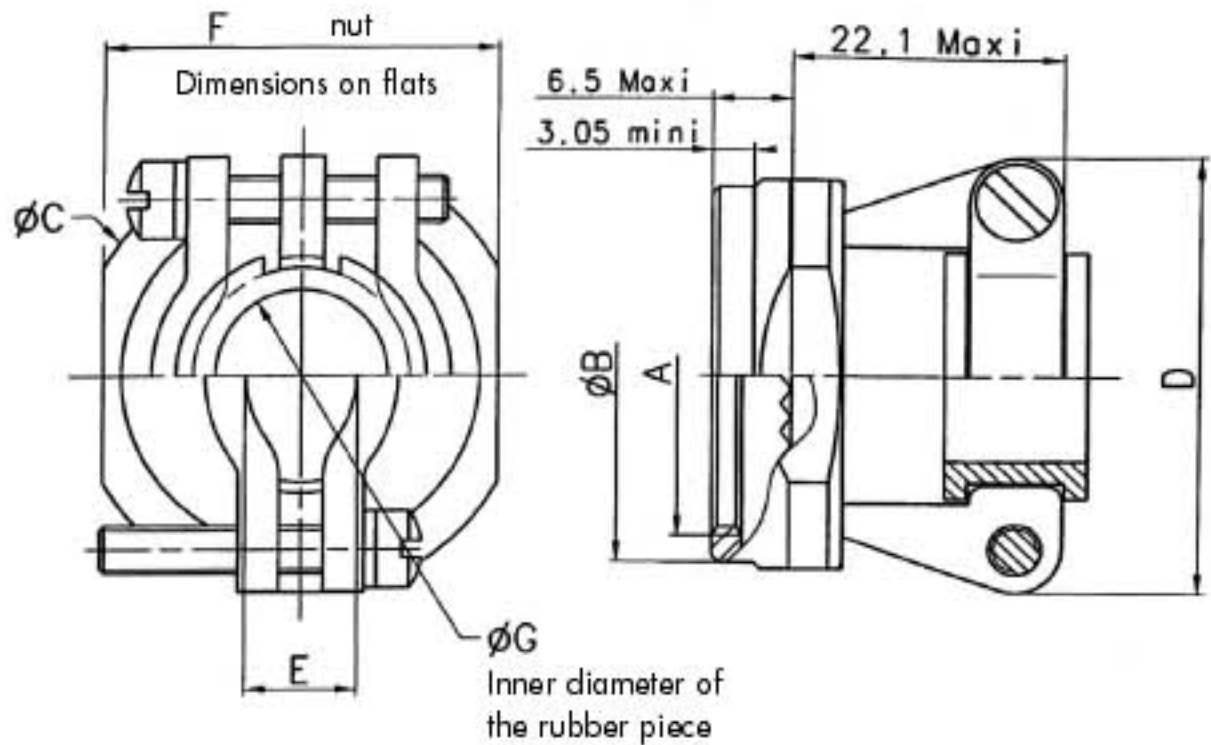


### TVSRD suitable for TV (MIL-DTL-38999 series 3) connectors

This backshell with serrations (360° accessories orientation teeth) gives mechanical support to the cable.



Size	Shell size code	A thread Iso Metric	B Ø Maxi	C Ø	D Ø Maxi	F <sup>+0.05</sup> <sub>-0.13</sub>
9	A	M12 x 1.0 - 6H	15,2	19	19,1	16,7
11	B	M15 x 1.0 - 6H	18,2	23	21,1	20,7
13	C	M18 x 1.0 - 6H	21,2	28	25,1	22,7
15	D	M22 x 1.0 - 6H	25,1	31	26,6	25,7
17	E	M25 x 1.0 - 6H	28,1	34	33,5	28,7
19	F	M28 x 1.0 - 6H	31,1	38	36,9	31,7
21	G	M31 x 1.0 - 6H	34,1	41	39,5	35,7
23	H	M34 x 1.0 - 6H	36,9	44	42	38,7
25	J	M37 x 1.0 - 6H	39,9	47	45,1	41,7

Dimensions in mm

### How to order

#### Amphenol designation – backshells for TV (MIL-DTL-38999 series 3) connectors

Series	TV	SRD	11	014
Type of backshell SRD: straight cable clamp backshell				
Size of backshell 9-11-13-15-17-19-21-23-25 same as connector size				
Finish 014: olive-drab cadmium plating 023: electroless nickel plating				